



RÉPUBLIQUE  
FRANÇAISE

*Liberté  
Égalité  
Fraternité*



**Accelerating  
the ecological transition**

# COMMITTED

## FOR A MORE SOBER AND UNITED SOCIETY

**At a time when we are collectively confronted with multiple crises (climatic, economic, health), ADEME, the Ecological Transition Agency, supports all society stakeholders in a more than ever essential change of model. Its action is fully in line with the achievement of the objectives of the government's plan.**

The climate and the preservation of resources are the major challenges for humanity, which require us to initiate a real change in our ways of producing and consuming, reconciling sobriety, economic development and quality of life. All stakeholders must be fully involved: public authorities, communities, businesses and citizens.

Through its action on the lowering the carbon intensity of industry, adaptation to climate change, the circular economy, mobility and air quality, building renovation, renewable energies, sustainable food, responsible digital technology, etc., ADEME supports and accelerates this transition to establish a more sober and united model of society, respectful of both the environment and

living things, but also a vector of economic opportunities and a creator of jobs.

Listening to all those who are implementing and will implement the ecological transition, ADEME supports innovation and research, advances knowledge and sheds light on the future through a forward-looking approach. It develops strategic public policy orientations to achieve carbon neutrality by 2050.

Across France, both metropolitan and overseas, but also on the European and international scene, ADEME places its expertise at the service of citizens, territories and economic stakeholders, giving them the keys to understanding and helping them take action.

**"ECOLOGICAL  
TRANSITION  
IS A COLLECTIVE  
RESPONSIBILITY"**

919

employees  
including **383**  
in regional offices

€973M

budget for 2022  
(excluding recovery plan)



€164M

signed with  
the regions in 2021

4,100

operations supported  
throughout the country  
in 2021



4,753

projects supported since  
2020 as part of the France  
Relance and France 2030  
programmes.

+15,000

companies  
and more than

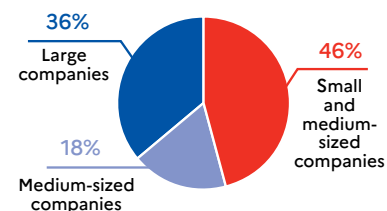
+12,000

communities supported  
since 2014

50

theses in 2021,  
of which 46 were  
co-financed

Distribution of grants  
per company size



€2 Billion

as part of France Relance  
(2021-2022)



# TOGETHER

While society is called upon to get involved, ADEME is at the service of all stakeholders (State, companies, communities and citizens) to support the whole of French society in the deployment of the ecological transition.

## Supporting the economy

It supports companies of all sizes through a wide range of interventions (methodologies, diagnostic tools, training, financial support, etc.). In concrete terms, it helps them save resources and energy, supports innovative projects via the France 2030 Programme and strongly encourages them to engage in production methods based on a circular economy, because the ecological transition constitutes a lever of economic and employment growth.

## Transforming territories

Communities have a unique ability to transform territories and unite citizens in favour of a necessary transition. ADEME supports them by providing them with a global vision of the challenges of their territory, along with concrete solutions, expertise and tools to act. It encourages them to go further, to work in collaboration with all stakeholders (elected officials, companies, citizens), to mobilise their citizens to become involved.

## Encouraging citizen mobilisation

In all places of life and activity, in all of its acts of consumption, in its ways of getting around, the agency calls for a commitment to ecological transition. To convince and encourage everyone to take action, ADEME shares its studies, disseminates practical advice and facilitates the connection with those involved in renovation or the circular economy. It gives citizens the keys to rethink their habits. Aware of the major role of associations, businesses, communities and the ability of citizens to bring best practices to their relational circles, it is developing a partnership and proactive approach towards all those who help to move the lines.



# OUR ACTION

## ADEME, A UNIQUE AGENCY MODEL

Through an intervention continuum, from research to innovation, to the application of solutions, including support for behaviour change, ADEME represents a unique agency model in Europe. On a multitude of cross-cutting themes, with a strong presence in all metropolitan regions and all overseas communities, it deploys ecological transition throughout the territory, thanks to the close link between its technical and regional directorates. ADEME is a public industrial and commercial establishment, under the supervision of the Ministry for an Ecological Transition and Territorial Cohesion, Ministry for the Energy Transition and the Ministry for Higher Education and Research.

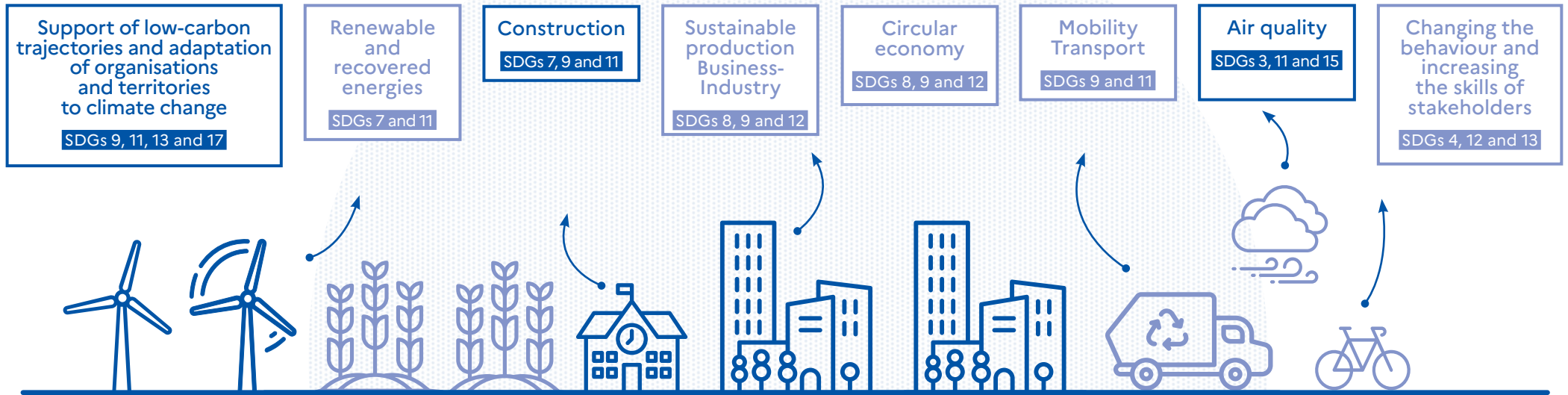


The AGIR platform for ecological transition offers personalised support, concrete solutions and feedback.

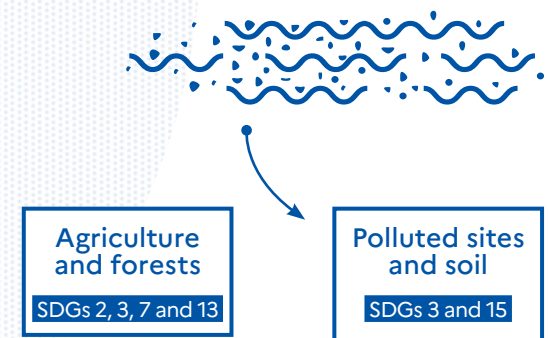
[agirpourlatransition.ademe.fr](https://agirpourlatransition.ademe.fr)



# OUR AREAS OF ACTIVITY

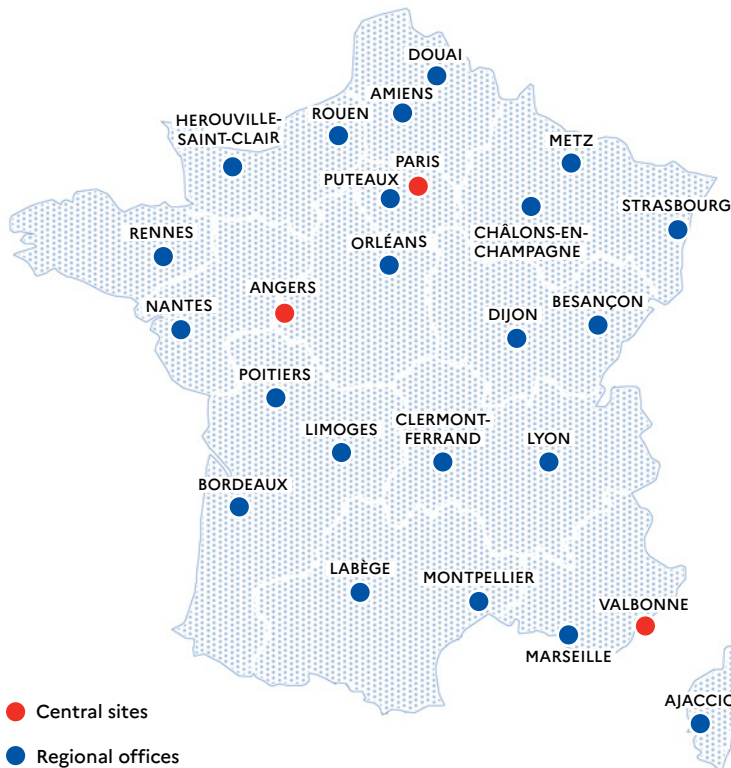


ADENE's mission to **accelerate the transition to a more sober and united, employment-rich, more human and harmonious society**, is part of France's roadmap of sustainable development goals (SDGs), published on 20 September 2019. Over the coming years, the Agency will strive to ensure that its action maximises its contribution to all SDGs. To increase the beneficial impact of its actions against poverty and for greater solidarity, ADENE will more systematically integrate social dimensions into its action (SDGs 1 and 10). ADENE also integrates the challenges of preserving water resources and biodiversity into its actions (SDGs 6, 14 and 15).



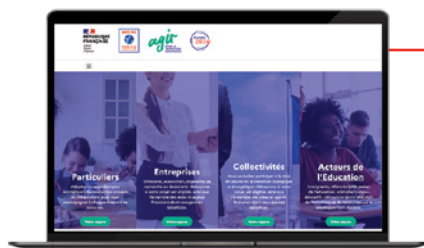
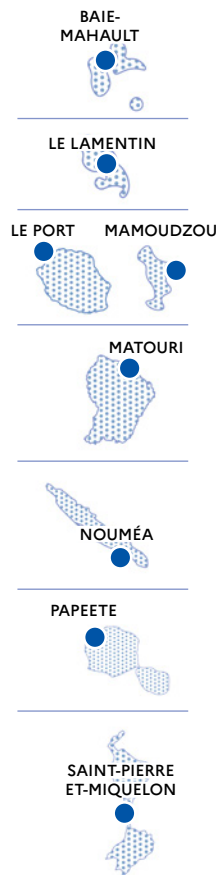


## LOCATION MAP



● Central sites

● Regional offices



The AGIR platform is a gateway to ADEME's advice and services. It offers concrete solutions to all citizens, economic stakeholders and territories who want to act in favour of the ecological transition: personalised content, submission of projects for funding, expertise, solutions and feedback.

[agirpourlatransition.ademe.fr](http://agirpourlatransition.ademe.fr)

**ADEME**ACTUS  
**ADEME**MAGAZINE  
**ADEME**RECHERCHE  
**ADEME**STRATÉGIE  
**ADEME**INTERNATIONAL

ADEME Infos is ADEME's institutional information system. It combines a set of publications aimed at informing the Agency's target audiences about its expertise and skills.

Subscribe to the publications of your choice on [infos.ademe.fr](http://infos.ademe.fr)



Agir pour  
la transition



[ademe.fr/en](http://ademe.fr/en)

011443

